

# Work Incentives Benefits Counseling in Wisconsin



Presented by:

**Amber Kwiatkowski**

**Work Incentives Benefit Specialist**

**Working & Benefits**

**Many individuals believe that they can't work because they will lose important benefits such as health insurance.**





**Each person's  
benefit situation  
is different.**

**A Benefits Specialist Can Help!**

Social Security Disability Insurance

# SSDI

- Based on own work record, or
- Record of a parent who is:
  - Disabled, Retired, Deceased
- No asset limit

Supplemental Security Income

# SSI

- Needs based
- Limit to amount received; \$914 (2023)
- Income & asset limits
- Automatic Medicaid

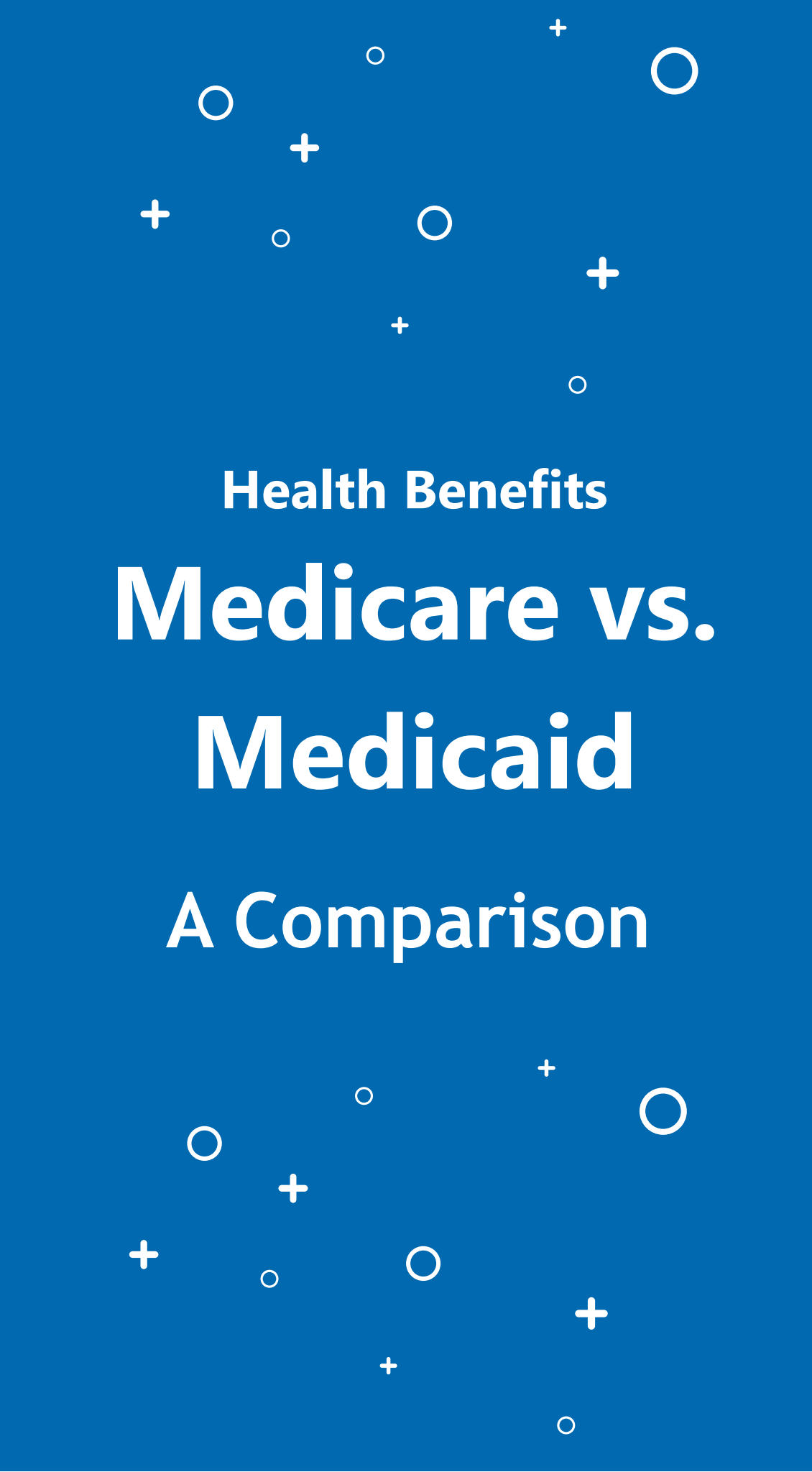
**Social Security Benefits**

## **SSDI and SSI**

### **A Comparison**

# Medicare

- Not as comprehensive
- May have more costs
- Parts A, B, D
- SSDI recipients eligible after two years
- Medicare Savings Plans (MSP) and LIS (part D extra help)



Health Benefits

## Medicare vs. Medicaid

A Comparison

# Medicaid

- Comprehensive coverage
- Different programs/types
- Each has own income and asset limits
- Some have premiums or cost shares



# Work Incentives Benefits Specialists

- Provide accurate information about how working will affect cash payments, health insurance, housing, and any other benefits a person receives. Provide a written Benefits Summary and Analysis Report.
- Educate beneficiaries about the work incentives available and how to utilize them.
- Assist with understanding wage reporting requirements and how to report earnings.





# Work Incentives Benefits Specialists Services

- Assist with overpayments issues and options for resolving them.
- Refer to other agencies, programs, services when needed.
- Make informed choices about work.
- Reduce fear and misunderstanding.
- Improve communication between agencies and beneficiaries.
- Resolve work-related benefit problems.





# Work Incentives Benefits Specialists Funding

Funding available through three sources:



**Vocational Rehabilitation**

**Division of Vocational  
Rehabilitation (DVR)**

Contact DVR Counselor to  
authorize service



**Long-Term Care: Family  
Care/IRIS**

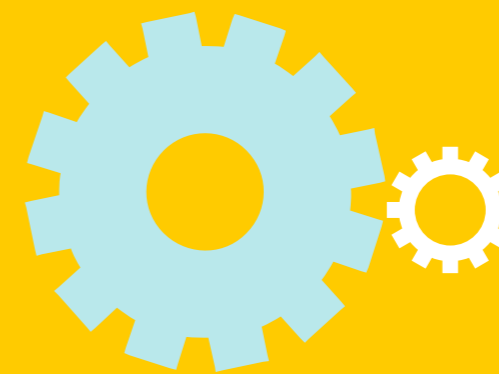
Contact Care Manager or IRIS  
Consultant



**Work Incentives Planning and  
Assistance (WIPA) grant from  
Social Security Administration**

Contact WI WIPA: Employment  
Resources

# Ticket to Work Program

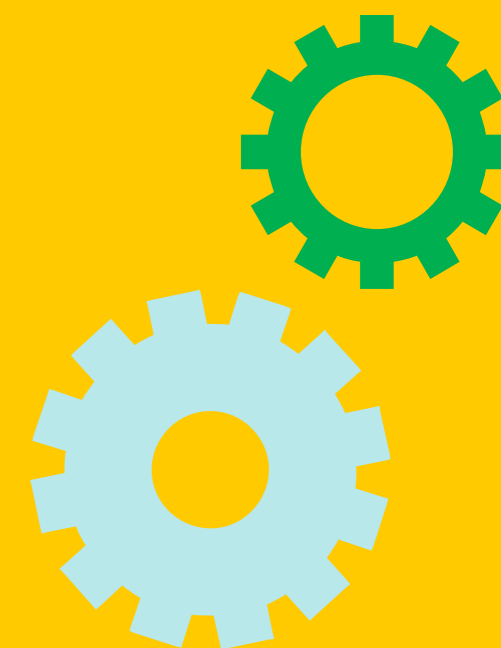


Social Security's free employment services available to beneficiaries between the ages of 18 through 64.

Choose either state DVR agency or an Employment Network Agency. DVR consumers automatically use their Ticket to Work. Employment Networks generally are looking to work with beneficiaries with a goal of working off benefits.

Medical reviews postponed if Ticket assigned, and timely progress being made.

Website: [www.choosework.ssa.gov](http://www.choosework.ssa.gov)



# Plan to Achieve Self Support (PASS)

- SSI work incentive that allows the saving of income/resources to purchase items or services needed to reach a specific work goal.
- The work goal must be a goal that will decrease or eliminate reliance on cash payments.
- Must be in writing, approved by Social Security, are time limited and monitored regularly.
- The income or assets set aside in a PASS Plan are not counted by SSI. Use SSI cash payment to pay for basic living expenses while setting aside countable income into PASS plan account/savings.
- Not everyone is a good candidate for PASS. Consult with a Benefit Specialist first!

# When Should an Individual Contact a Work Incentive Benefits Specialist?

## If they are...



Considering work for the first time.



Making more money.



Going back to work.



Developing a career plan.



Looking for a job.



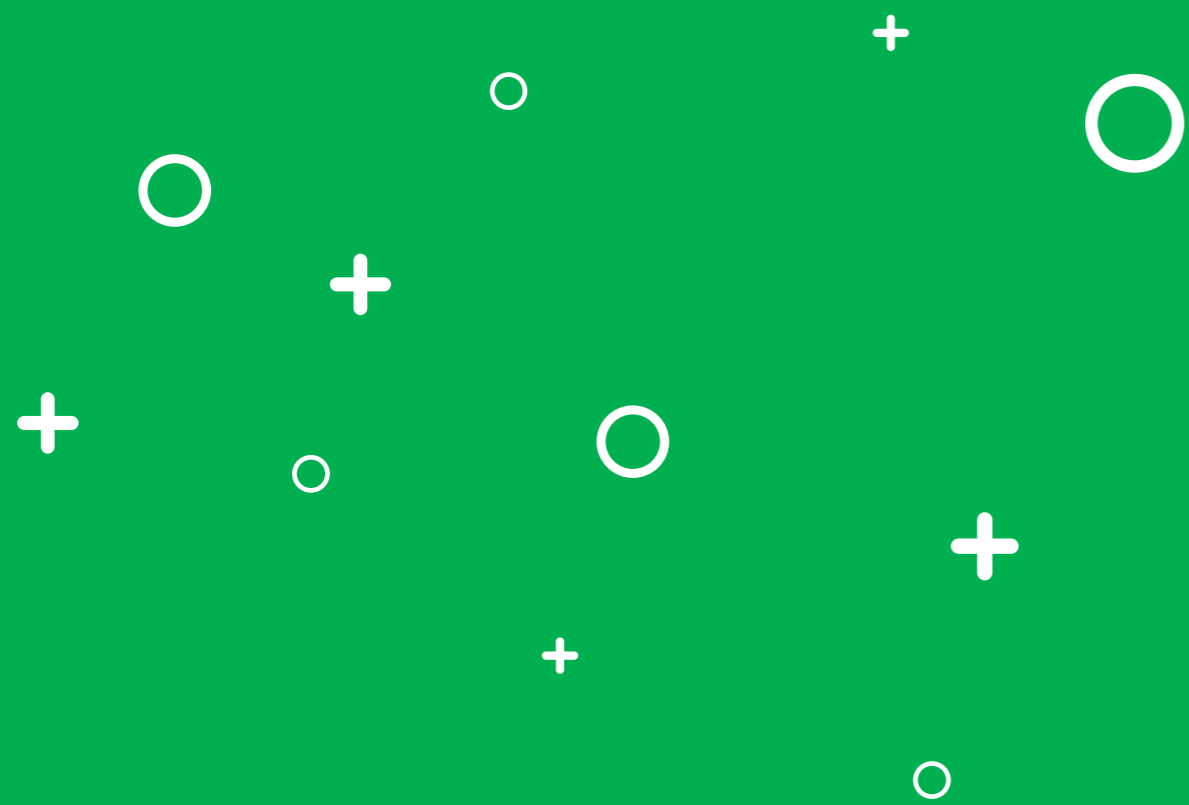
Having problems or questions about current benefits.

**A Benefits Specialist Can Help!**

**It is possible to  
work and keep  
important  
benefits.**



# Questions



# THANK YOU!



Presented by:

**Amber Kwiatkowski | [kwiatkowski@eri-wi.org](mailto:kwiatkowski@eri-wi.org) | [www.eri-wi.org](http://www.eri-wi.org)**



# Sauk Prairie Schools: Beyond 18 Options and Employment

## **Transition Talk Tuesdays**

10/17/2023

Liz Kennedy, Transition Coordinator, SPSD

Special Guest:

Amber Kwiatkowski from [ERI, Inc.](#)

# How Sauk Prairie School District can help with this process...



Transition Coordinator will:

- assist families in referring to the ADRC at 17.6 (see 09/26 TTT webinar for info on ADRC)
- coordinate with any outside agencies with whom you may be collaborating, refer you to the experts :)
- share website links, brochures and information
- assist in referral to DVR (benefits analysis)
- Wisconsin Transition Resource Guides - available in Spanish and English
- help you plan through the PostSecondary Transition Plan (PTP) for the steps you need to take in this process
- Can provide copies of Opening Doors publications (Spanish and English)

<https://witig.org/transition-planning/opening-doors/#:~:text=The%20Opening%20Doors%20series%20provides,to%20assist%20with%20transition%20planning.>

# Links

Ticket to Work:

<https://dwd.wisconsin.gov/dvr/programs/social-security/understanding-ttw.htm>

PASS:

<https://dwd.wisconsin.gov/dvr/programs/social-security/pass.htm>

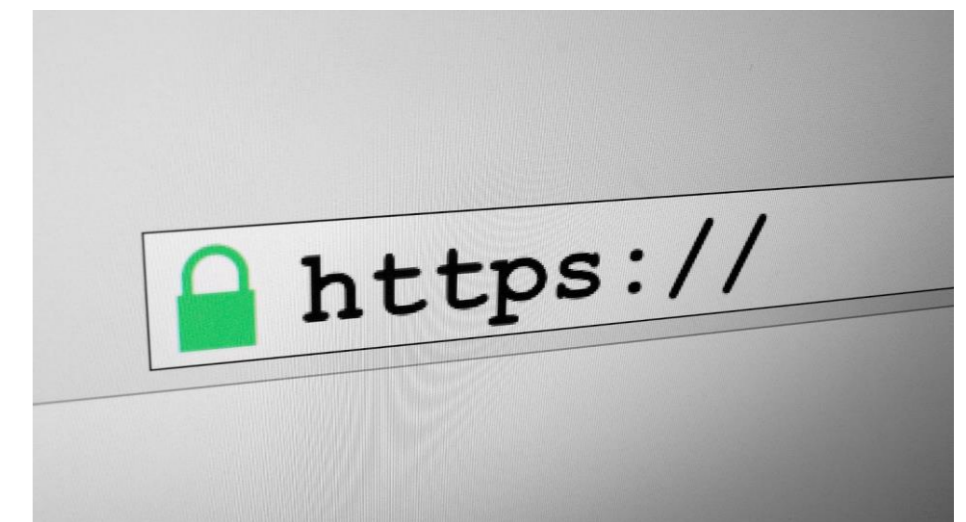
Benefits Counseling:

<https://www.dhs.wisconsin.gov/benefit-specialists/index.htm>

Benefits Analysis can be part of your IPE through DVR, or LTS

Wisconsin Statewide Parent-Educator Initiative: (English and Spanish)

<https://wspei.org/transition/getting-started/>





ONE More Transition Talk Tuesday Coming up...

## Transition Tuesdays

9/19-10/24

- ✓ Sauk Prairie Transition: PTP, Post secondary education planning, financial aid discussion with college reps
- ✓ -The ADRC, Long Term Supports and SSI application
- ✓ -Guardianship and supported decision making – The continuum of support options
- ✓ -Healthcare for people with disabilities
  - Working while on social security, Ticket to Work, PASS program, Benefits Analysis
  - Sauk Prairie Beyond 18 programs and employment**

How to sign up for the other TTT sessions....

Here is the link for families to sign up:

Registration -- <https://go.wisc.edu/RegTTTSauk>

Website -- <https://go.wisc.edu/TTTSauk>

Todas las charlas se interpretarán simultáneamente al español.

Para descargar un folleto en español. flyer

También está disponible una página de inscripción en español. <https://go.wisc.edu/9g3174>

All talks will be simultaneously interpreted into Spanish.

A registration site in Spanish is also available. <https://go.wisc.edu/9g3174>

Families can register online and we will also be offering in-person for those who do not have access to technology outside of school. I have reserved the BOE room for each of the evenings at 440 13th Street, Prairie du Sac, 53578

We had one virtual Transition Talk about Special Needs Trusts. You can access that at the website to watch at any time.



## Questions and Contact Information

Liz Kennedy

Transition Coordinator

Sauk Prairie School District

[liz.kennedy@saukprairieschools.org](mailto:liz.kennedy@saukprairieschools.org)

608.644-2863 \* new number

Questions and special thanks to Tim Markle,  
Amber and our Spanish interpreters!

